

Blocksi

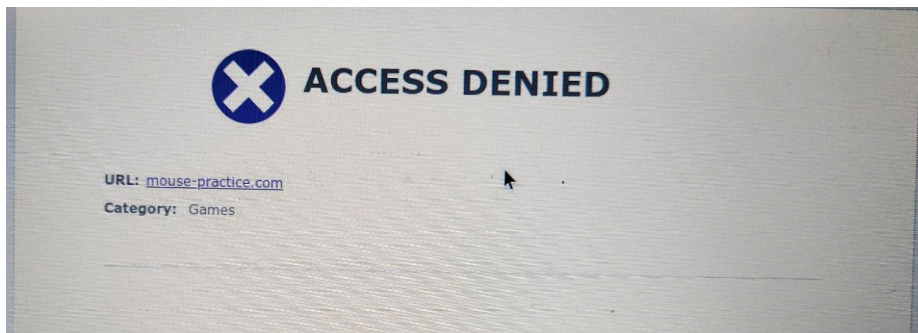
Blocked Website Vs. Keyword Filtering Block

In Blocksi Student Device Management software, a blocked website and a site blocked due to a keyword filter function differently:

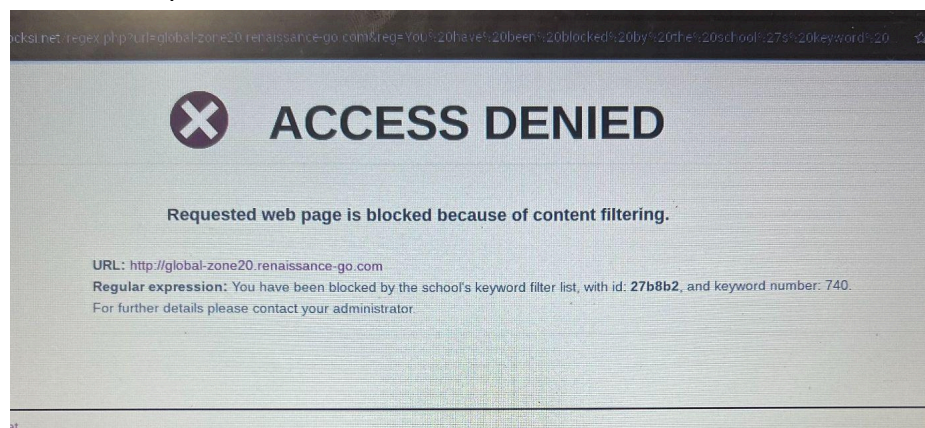
1. **Blocked Website:** The "Access Denied" message occurs when a specific website has been intentionally added to a list of restricted sites. Any attempt to access the website is automatically denied, regardless of the content. It is blocked because the site itself is deemed inappropriate or unfit for student access, often based on predetermined categories such as social media, gaming, or adult content. However, some blocked websites can be reviewed by administrators and, if deemed appropriate, can be **unblocked** for general access. Additionally, teachers often can "Allow" certain websites that may have been blocked, giving them flexibility in granting access to resources that support classroom learning.
2. **Blocked Due to Keyword Filter:** This happens when a website contains certain flagged words or phrases. The site may not be inherently inappropriate, but it is restricted because its content matches keywords set by the administrator, like violence, drug references, or offensive language. It's important to note that a keyword filter block doesn't necessarily mean the student was actively searching for that term; rather, the site might contain content or metadata with those keywords, causing it to be blocked. The filtering system is based on the presence of these words, regardless of user intent.

How can I tell the difference between the two types of blocks?

A **blocked website** will list the URL followed by a category designation.



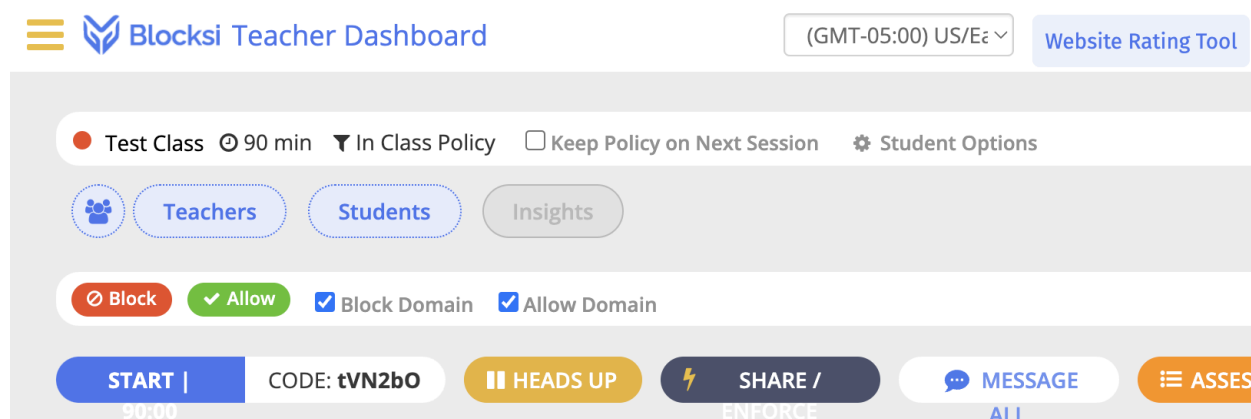
A **keyword filter block** will display “Requested web page is blocked because of content filtering.” It is important to note the keyword number as this can be used by district technology administrators to identify what keyword provoked the block. Send this three-digit code to your Innovation Specialist for further review.



What can I do if a student encounters an “Access Denied” screen?

For Blocked Websites:

- **Review the Site:** Teachers should first review the website to ensure it is appropriate and relevant to the lesson. If they believe the site is educationally valuable and safe, they can:
 - **Allow the Site:** Blocks i allows teachers to temporarily "Allow" a blocked site. Simply, start the class and click on the green “Allow” button found above the start button, and add a URL to the allow list. (see image below)
 - **Request a Website Rating Change:** If a website is incorrectly categorized by Blocks i, click on the Website Rating Tool button in the upper right corner of the site and add the URL. This request is directly with Blocks i, and not associated with Bradley County Schools.



For Keyword Filter Blocks:

- **Check Alternative Resources:** Encourage the use of alternative websites or resources that might provide similar information without triggering keyword filters.
- **Request an Exception:** If the site is important for the class but is blocked due to the keyword filter, the teacher can request an exception from the administrator after reviewing the content for appropriateness. Please send the three-digit keyword number to an innovation specialist who can take appropriate action.